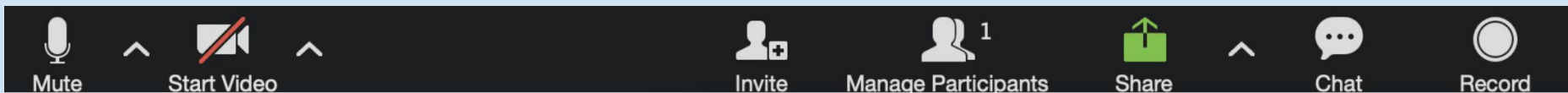
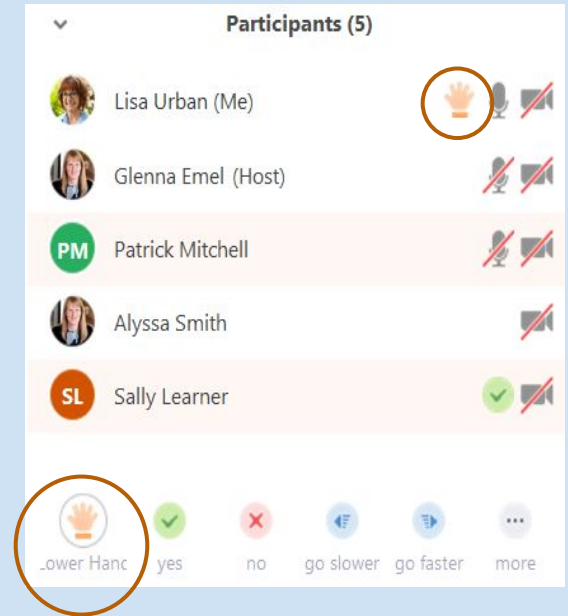
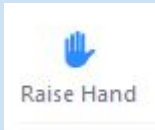


# Using Zoom

- Everyone will be muted
- Use the Raise Hand feature, and we'll unmute you
  - Find it on the Participants Panel
  - Keyboard Shortcuts: Alt+Y (Windows) Opt+Y (Mac)



Manage your audio and video settings

Open the Participants Panel, so you can Raise Hand and see others' names

Open the Chat Panel to engage with text dialogue during the meeting

HERE 1475 FT  
ABOVE  
THE OCEAN  
THE MIGHTY  
MISSISSIPPI  
BEGINS  
TO FLOW  
ON ITS  
WINDING WAY  
2552 MILES  
TO THE  
GULF OF  
MEXICO



# Watch the Line MN

Expect the best,  
prepare nonetheless!

Informational Webinar  
August 2020

# Agenda

1. Welcome and Introductions
2. Land Acknowledgement
3. Line 3 Replacement overview
4. Watch the Line project overview
5. Invitation to volunteer



# Introductions

What is your name?

What pronouns would you like us to use?

Whereabouts do you live?

How did you hear about this webinar?

What concerns you about Line 3?





# Land Acknowledgement

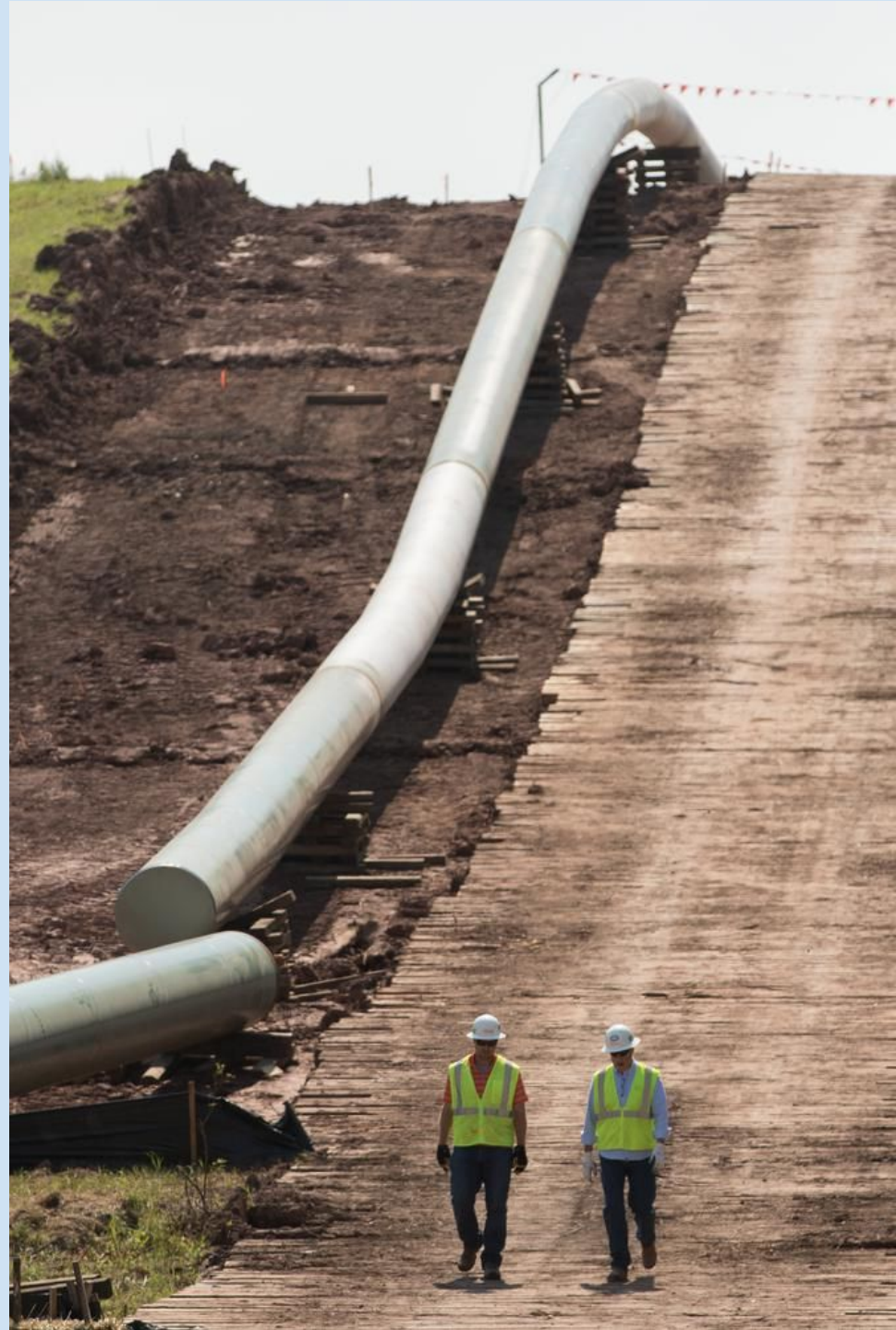
We acknowledge the Dakota and Ojibwe peoples on whose land we meet. We thank them and their relatives for their care of the land, and we recognize their continuing connection to the land, waters and community. We pay our respects to them and their culture; both past and present.

# Line 3 Replacement Overview

Where would it be built?

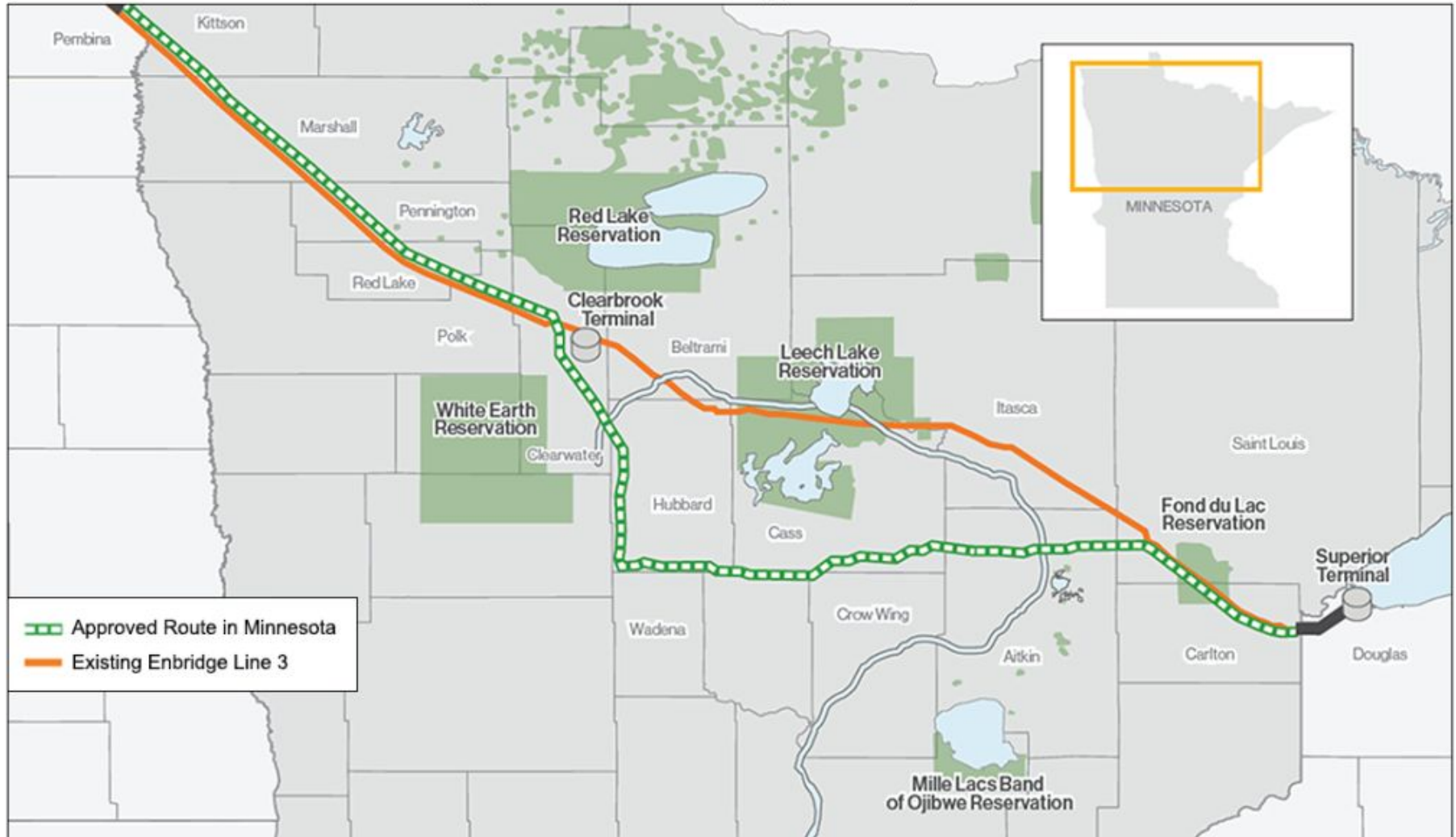
What are the concerns?

When could construction start?



# Line 3 Replacement Route

Enbridge Line 3 Current vs Approved Pipeline Route



Source: Enbridge

# Causes for Concern

- **Climate damage:** \$287 billion over three decades.
- **Environmental threat:** Crosses 218 water bodies and 79 miles of wetlands.
- **Treaty violations:** Puts greatest burden on Ojibwe people, and their rights to hunt, fish and gather.
- **Unneeded risk:** MN DOC says Line 3 isn't needed.



# Where we stand

- PUC approved two key permits, now being challenged in the MN Court of Appeals
- MPCA water quality (Section 401) Permit pending. Contested case hearing just held
- Preconstruction underway (clearing trees for pumping stations, power lines)
- Construction could start as soon as November

# Questions about Line 3?





# Watch the Line MN Project Overview



What is Watch the Line?

Why do we need it?

What does monitoring entail?



# Watch the Line MN

WatchtheLineMN is a coalition of individuals opposed to the Enbridge Line 3 crude oil pipeline and the environmental damage it would cause in northern Minnesota and the Headwaters Region.

Should the project get all needed permits, we plan to closely, and lawfully, monitor its construction and report on any suspected environmental violations.



# About Watch the Line MN

- Following models in Iowa, North Carolina
- Preconstruction started long ago
- Enbridge is required to hire up to 10 independent monitors who report to the regulatory bodies. But, Enbridge has control over who these monitors are, and the training they receive.
- PUC directed Enbridge and contractors to “respect the rights” of Line 3 observers
- Monitor/report on Line 3 *following the law*, for your safety and the project’s integrity

# Roles

- Monitors
- Coaches
- Data analyzers
- Technical Experts
- Planning Team





# Monitors

- Adopt a section of pipeline
- Commit to a couple of observations a week
- Focus on water and wetland impacts
- Submit photos and written observations



# Protocols

- Be safe!
- Keep it legal!
- Observe from public right of way
- Go with friend and observe as a team
- Check your biases and emotions, focus on collecting good info





# A Typical Monitoring Trip



1. We work with you to choose the route section you will adopt
2. We'll identify the specific locations where you will record observations (typically road crossings)
3. You decide when to go monitoring
4. With your buddy, you proceed to each location, taking photos and making notes at each stop
5. After your trip, you submit your photos and notes to us online

# Frequently Asked Questions

## Will I need to interact with Enbridge employees or security, or law enforcement?

No. If anyone approaches you and asks what you are doing, do what feels safe and comfortable for you. If you choose to engage, be honest about why you are there. Emphasize that your intention is to act within the law. You will have a volunteer ID card with some suggested language. Leave if you feel unsafe. Please include a full description of any interactions in your scouting report.

## What will you do with my monitoring data?

Any data you submit may be made publicly available via web site, media, or other platforms. Photos and written observations you submit will be considered by technical experts to determine if any action should or can be taken. For example, your data may be used as evidence in legal or regulatory filings.

## What is the time commitment for monitors?

It will depend on your scouting locations and the level of construction activity at them. But generally speaking, 1-3 visits per week (during construction). Enbridge expects to complete construction in under 9 months (once they begin).

# Frequently Asked Questions

## What if I don't live near the Line 3 route? Can I still help with this project?

Yes! If it is not practical for you to make regular scouting trips, we expect to have need for one-time monitoring. We can also find another role for you to fill with the planning team if you prefer. Reach out to us to discuss more.

## What effect does the Covid-19 situation have on this project?

Line 3 monitoring can be done with minimal Covid risk, provided you follow all of the appropriate protocols (masks, distancing, etc.). Please keep yourself safe, and also do everything you can to limit your exposure to local communities.



**What other  
questions do  
you have?**







# Wrap Up and Next Steps

- Next step: Monitor Training This Weekend
- Poll: Time preference
- We will send an email with registration link

Got more questions? Ask us:

[watchthelinemn@gmail.com](mailto:watchthelinemn@gmail.com)

[www.watchthelinemn.org](http://www.watchthelinemn.org)